

# CENTRL

Privacy360

CENTRL Privacy 360 is an integrated privacy management platform to help companies operationalize their compliance across multiple privacy regulations.

Data privacy is one of the most important issues facing corporations and the regulatory landscape on privacy is shifting on a daily basis. With the implementation of the General Data Protection Regulation (GDPR) in the European Union, and the recent introduction of the California Consumer Privacy Act (CCPA) comes a wave of possibility that similar regulations will quickly spread throughout the globe. Companies will have to implement scalable, real time processes to comply with the regulations. Not doing so will result in financial and credibility losses.

CENTRL Privacy 360 offers a comprehensive, intuitive and scalable platform to comply with multiple privacy regulations in one application. It includes end to end workflows to identify, measure and mitigate the privacy data risks across the enterprise. Specific regulation related rules can be easily configured to meet the business needs.

## Key Features



### Data Mapping & Data Inventory

- ✓ Create map of all processing activities that includes privacy data, and regulatory details for each
- ✓ Automate processing activity attributes like third parties, systems, transfers, lawful basis etc. by harvesting questionnaire responses
- ✓ Use data discovery to get granular data elements that map to processing activities



### Assessment Automation

- ✓ Conduct readiness assessment and select high risk processes for full data protection assessments
- ✓ Send questionnaires to internal owners or third parties to assess controls
- ✓ Assess effectiveness of controls, identify risk in different risk categories and track progress



### Risk & Issue Mitigation

- ✓ Identify and raise visibility of issues from each assessment
- ✓ Collaborate with internal groups and third parties; request updates on issue remediation
- ✓ Capture important details about specific issue severity, resolutions, recommendations, and issue status
- ✓ Create action plans, manage progress from start to completion



### Individual Rights Management

- ✓ Customizable, branded form for consumers and other subjects to submit requests
- ✓ Automatically assign incoming request to subject matter experts for resolution
- ✓ Assign tasks to internal teams and third-parties, manage due date, extensions per the privacy regulation
- ✓ Automatically look up data inventory to fulfill incoming request
- ✓ API's and connectors to integrate with internal ticketing and other tools



### Consent & Preference Management

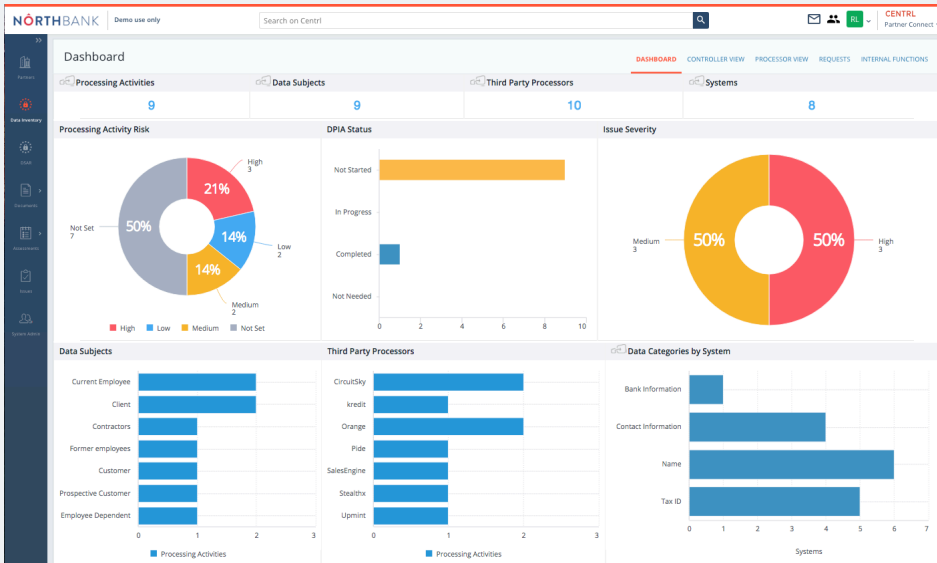
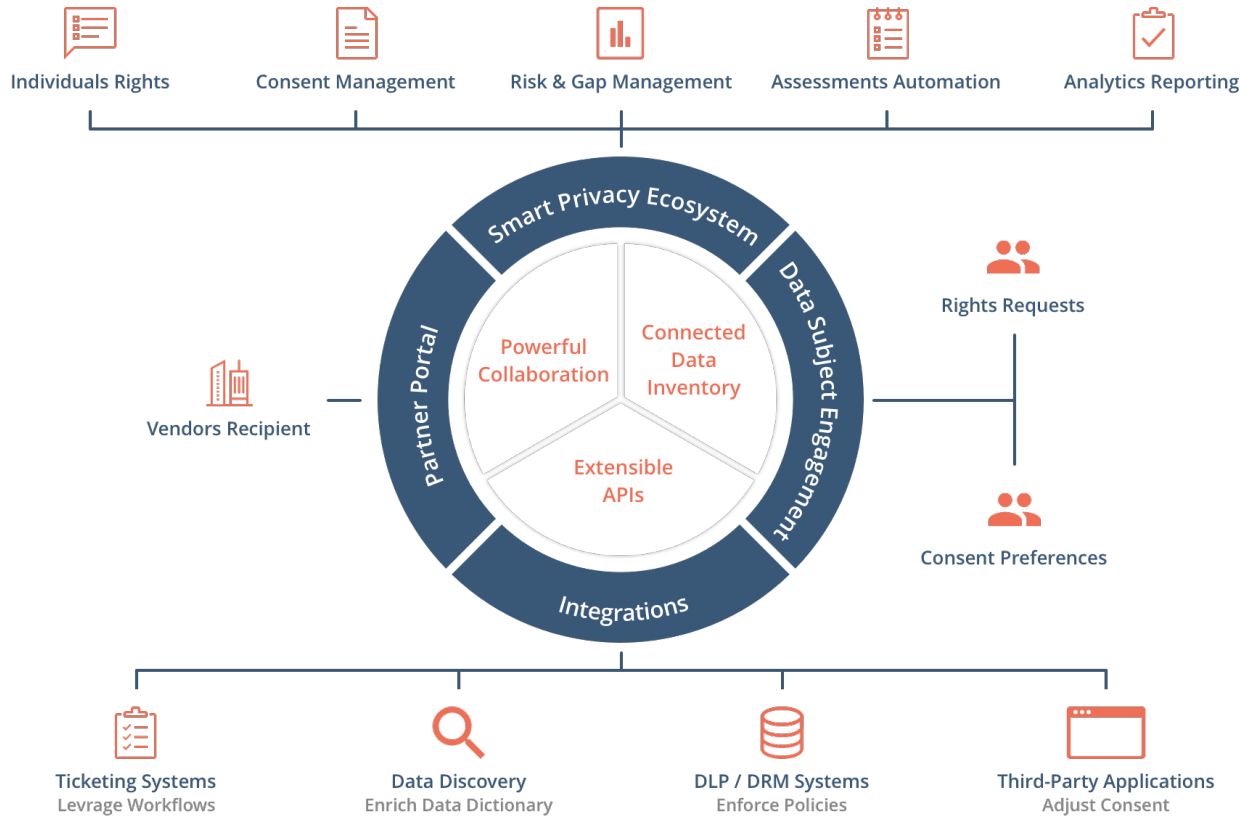
- ✓ Provide individuals a way to give or update consent across multiple channels
- ✓ Centralized record of consents for audit and tracking
- ✓ Integration with other systems to propagate and sync consent choices
- ✓ API's to look up consent preferences before transferring/selling data to partners



### Reporting and Analytics

- ✓ Comprehensive privacy dashboard to manage and monitor all privacy activities
- ✓ 360-degree view of processing activity by data subject, data categories, systems, third parties and other attributes
- ✓ Drill down and filters on multiple dimensions to gain better insights
- ✓ Manage compliance and exceptions across the organization

# CENTRL



For more information on  
Privacy360 visit  
[oncentrl.com/Privacy360](https://oncentrl.com/Privacy360)

## Why CENTRL?

**Integrated Privacy Platform**

**Highly Intuitive & Flexible System**

**Deep Automation Across All Modules**

**Extract & Normalize Unstructured Data**

**Dynamic & Configurable Dashboards**

**Rapid Implementation & Easy Integration With Open APIs**

**Enterprise Grade Security, Controls & Scalability**

Schedule a demo at  
[oncentrl.com](https://oncentrl.com) or 877.367.9094

October 2018

# CENTRL